



**Croswell** | 3 Bedrooms | 2 Baths  
Classic Series | 1,430 Square Feet



Elevation A



Elevation A Stone Upgrade Option

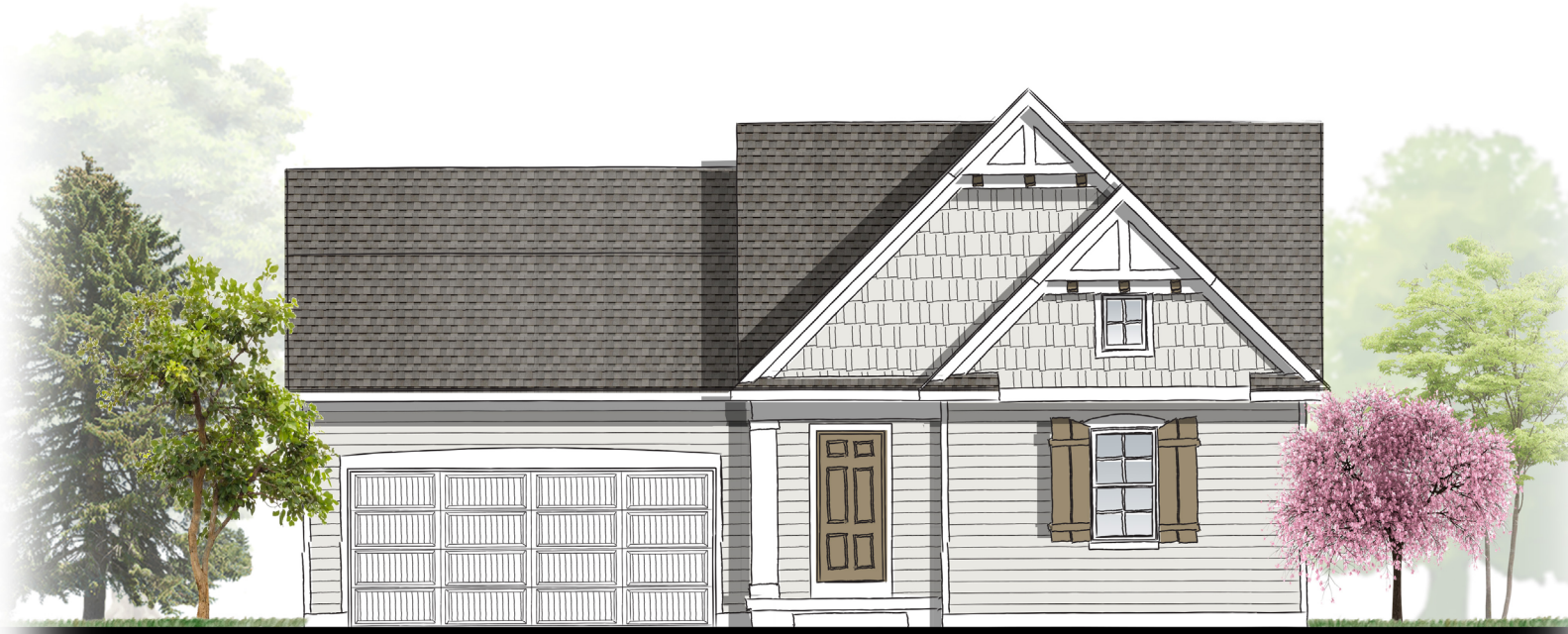




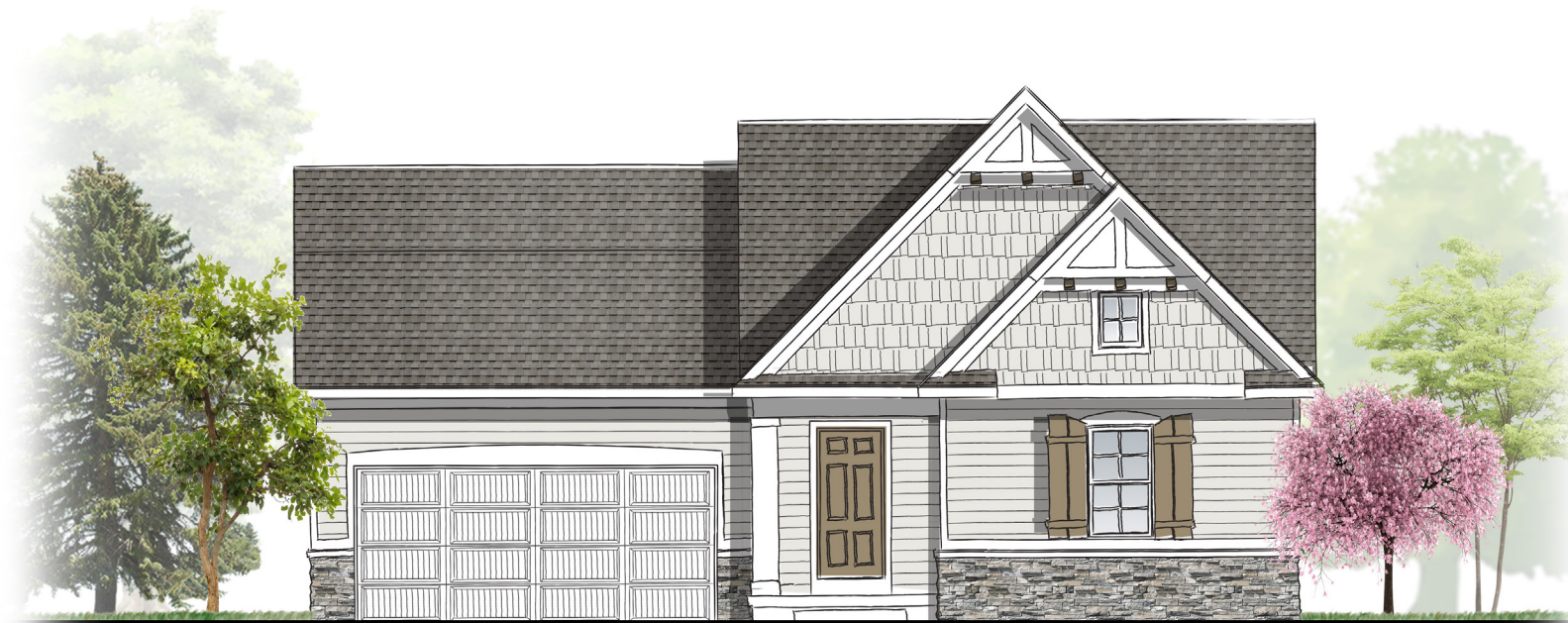
Elevation B



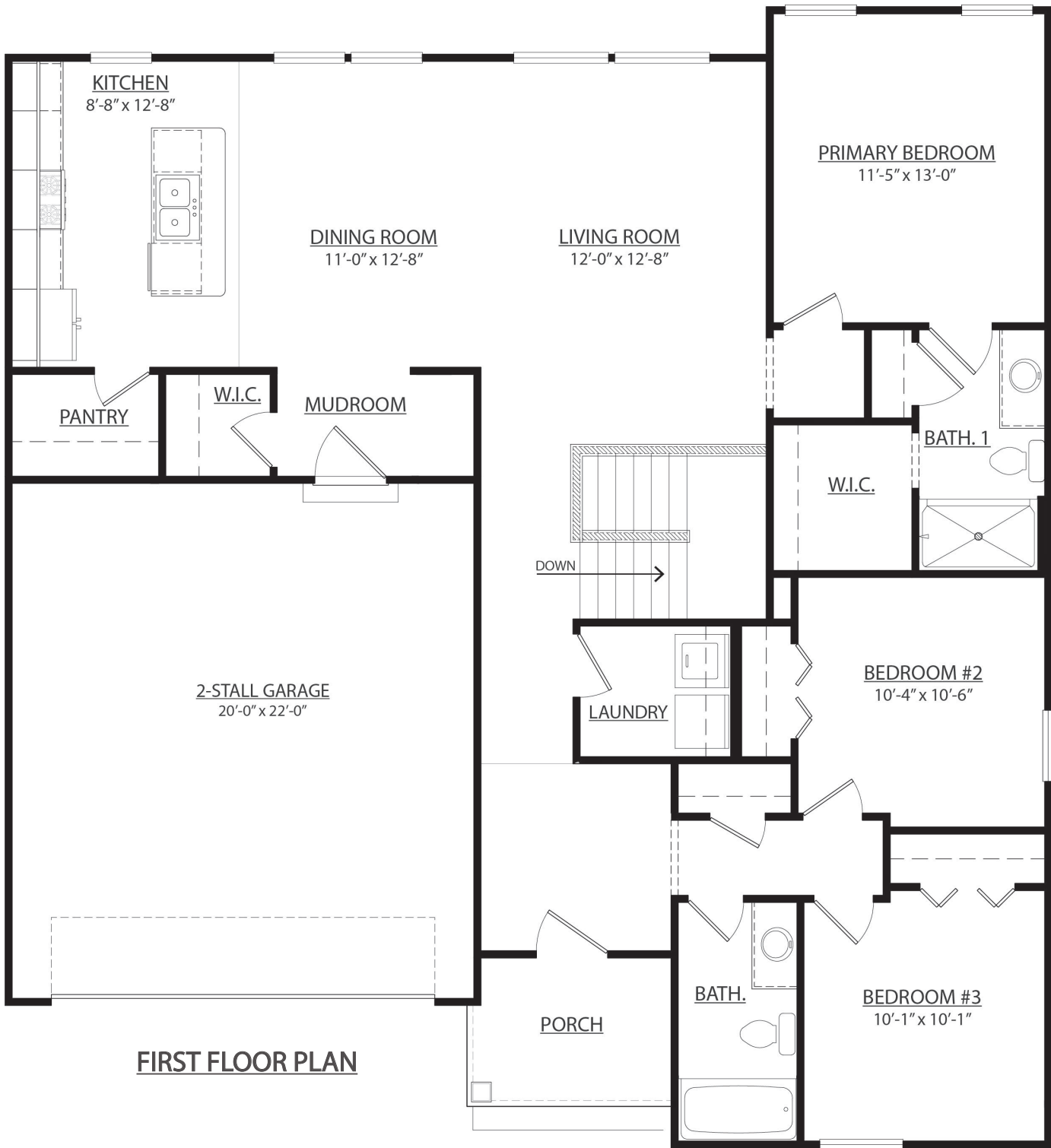
Elevation B Stone Upgrade Option



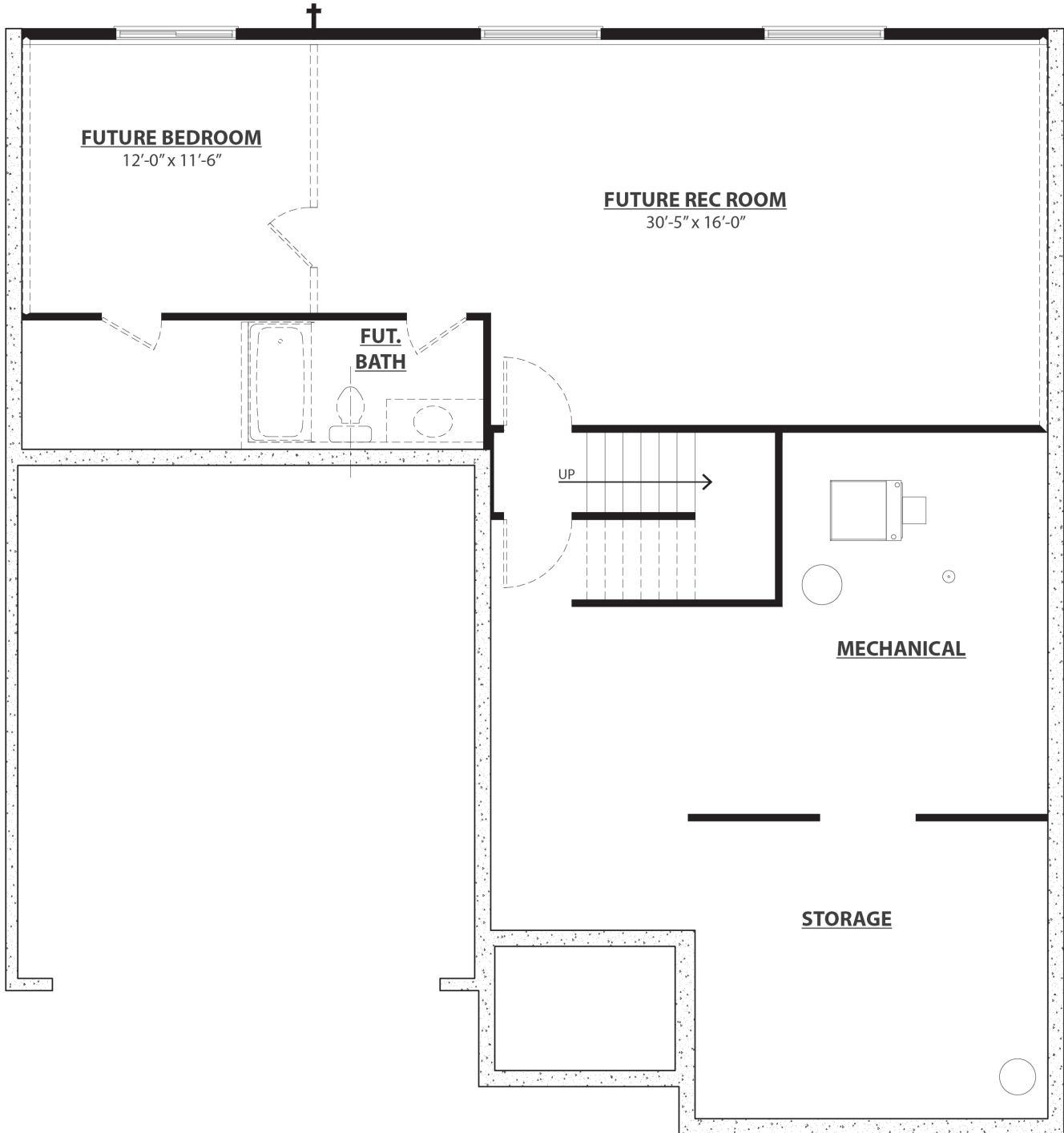
Elevation C



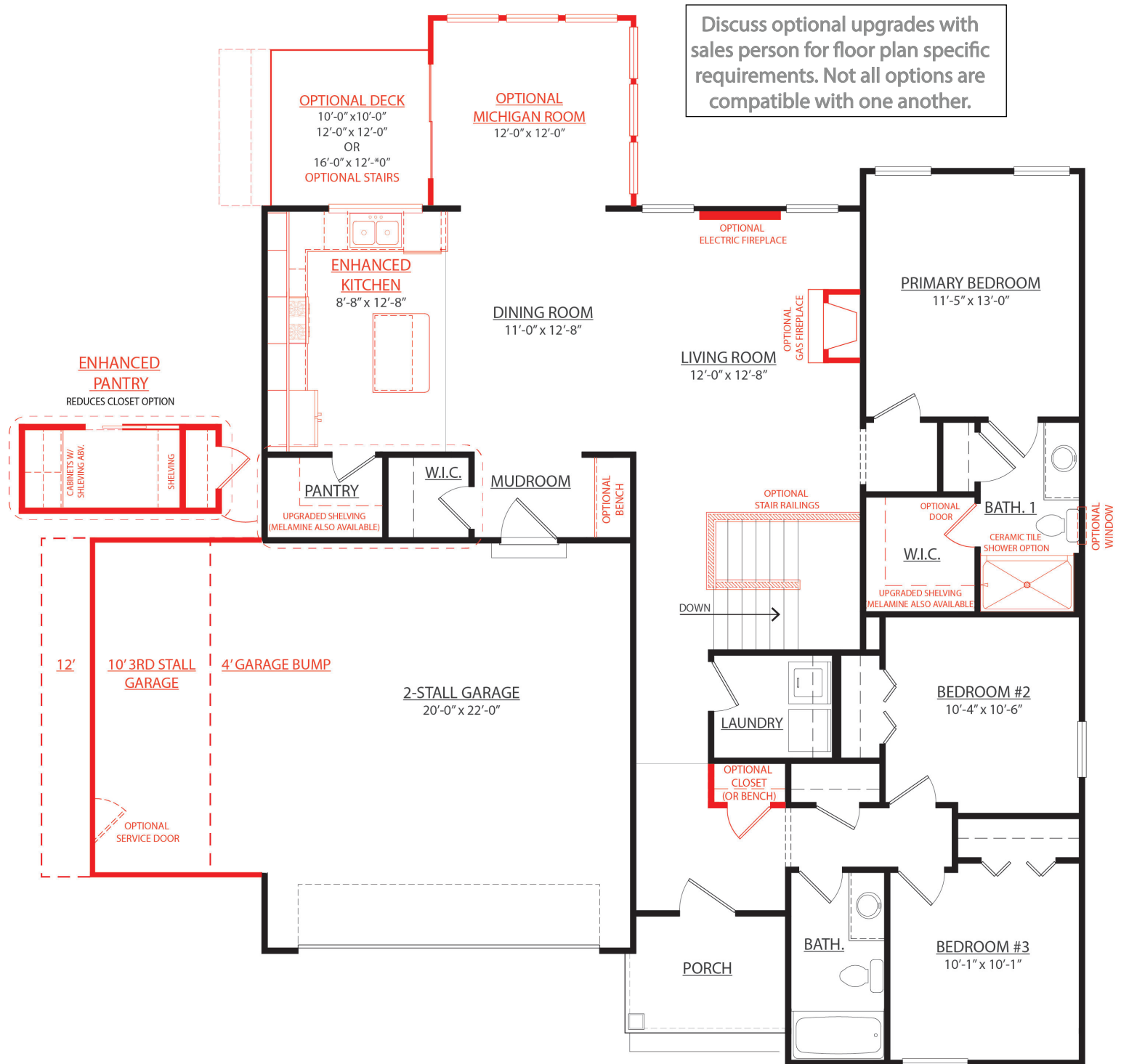
Elevation C Stone Upgrade Option



**FIRST FLOOR PLAN**

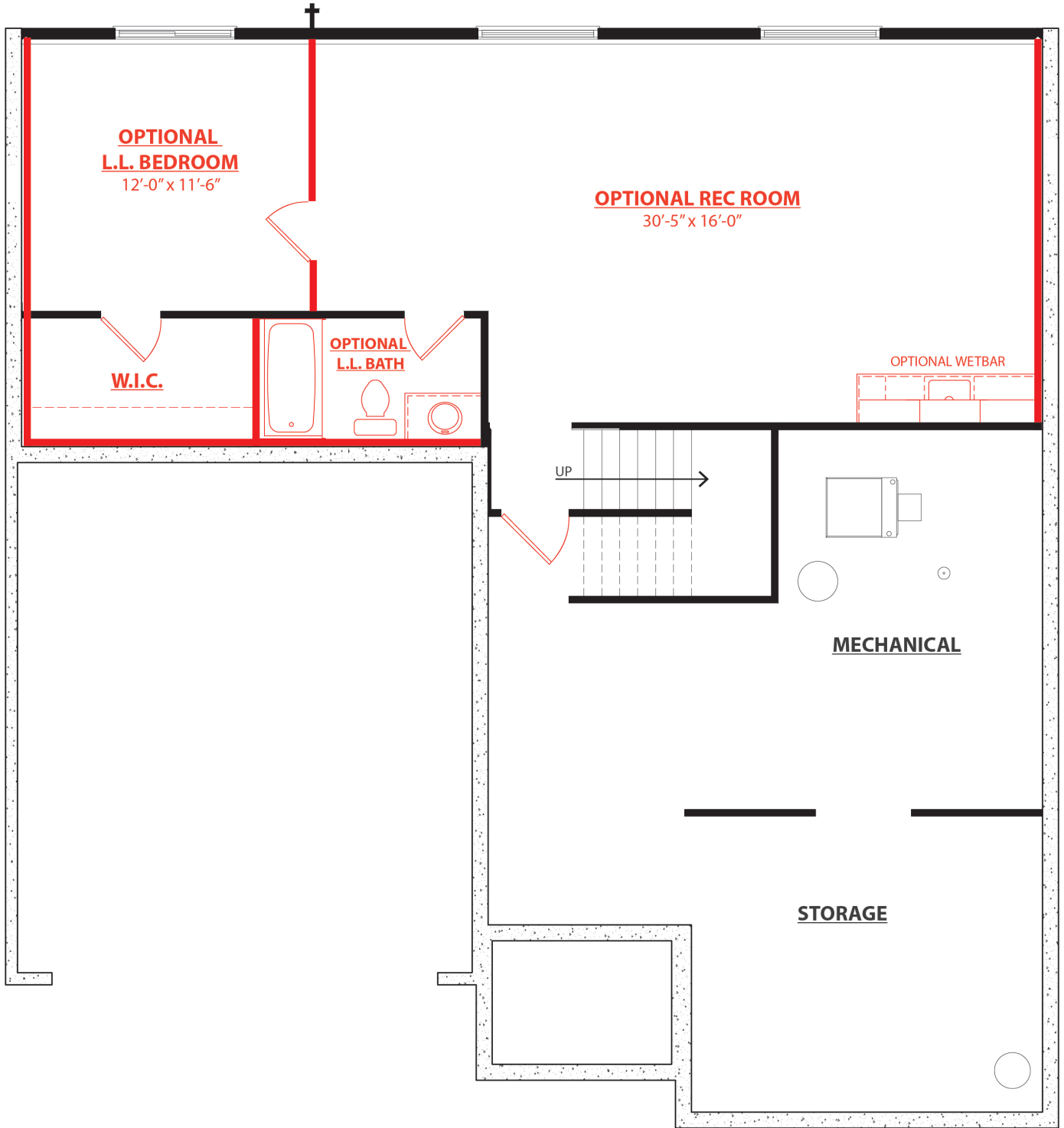


**BASEMENT FLOOR PLAN**

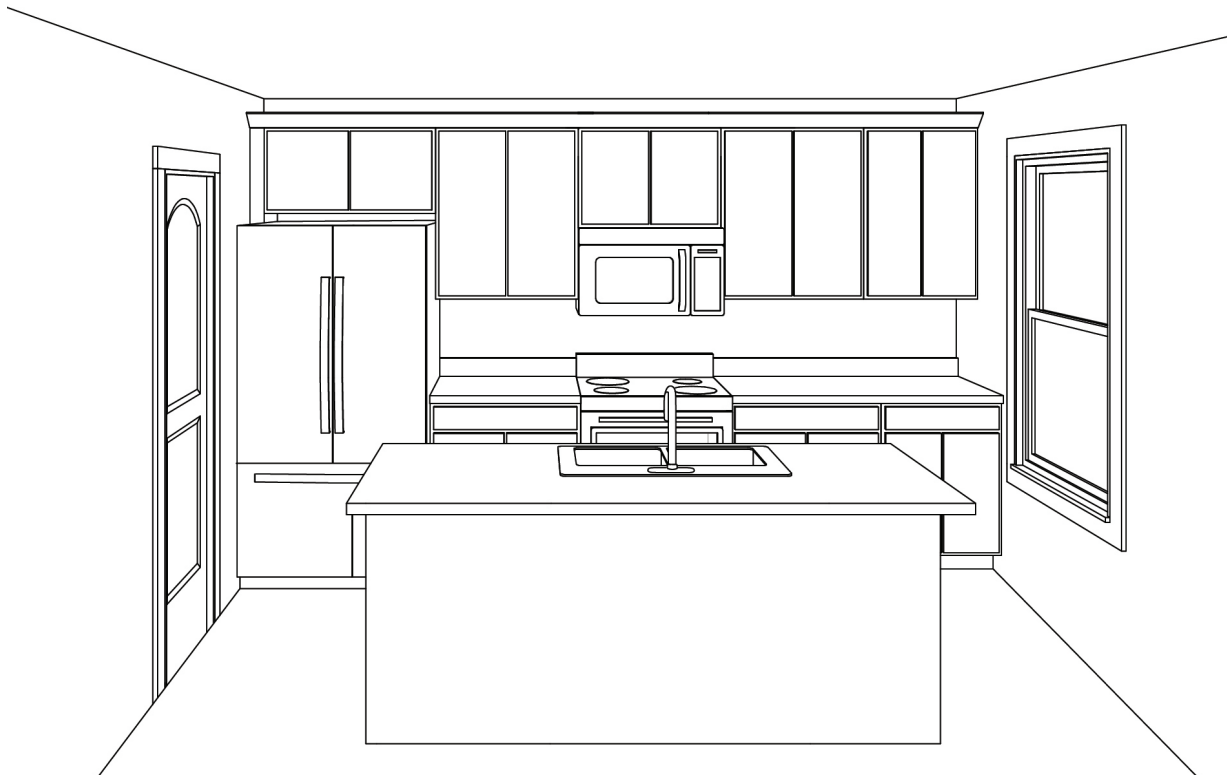


Discuss optional upgrades with sales person for floor plan specific requirements. Not all options are compatible with one another.

## OPTIONAL UPGRADES - FIRST FLOOR PLAN



**OPTIONAL UPGRADES - BASEMENT FLOOR PLAN**



**INCLUDED KITCHEN LAYOUT**



**ENHANCED KITCHEN LAYOUT**